



Cable Modem Self-Installation Kit

441 Science Park Road
State College, PA 16803

Technical Support: **1-800-782-6206**

www.windstream.com

(1/10)



STEP 1: Installing the Ethernet Card

If your computer already contains an Ethernet (or NIC) card, skip this step and proceed to Step 2, “Configuring the Ethernet Card” below. Otherwise, if you need to install an Ethernet card and have not yet installed it, shut down your computer and follow the manufactures instructions for installing your Ethernet card.

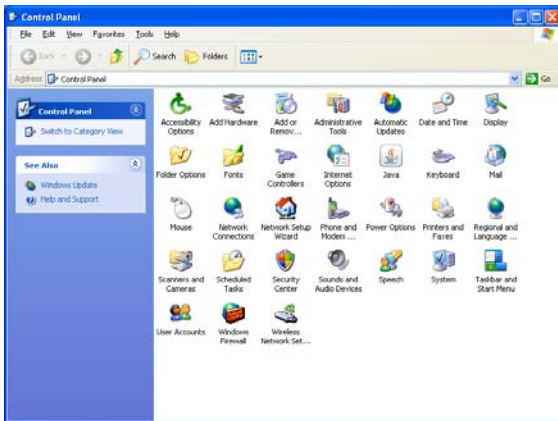
STEP 2: Configuring the Ethernet Card

These instructions vary based on your operating system. Follow the section that applies to the operating system your computer is running.

For Windows XP

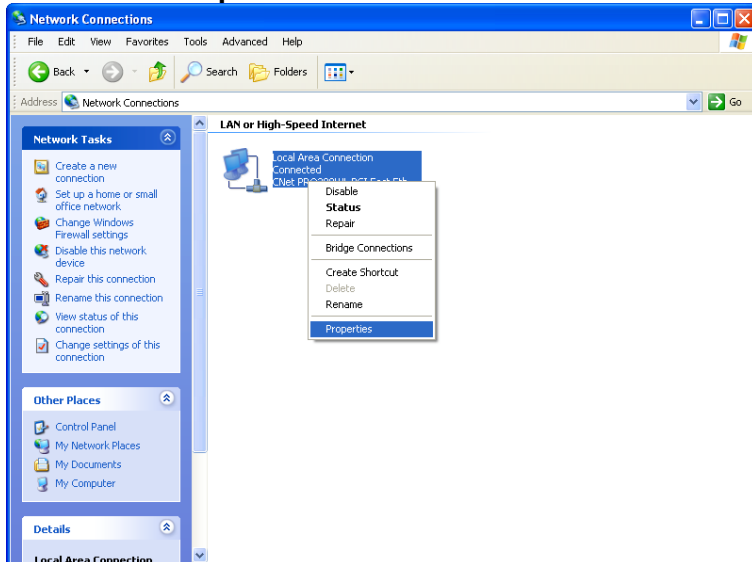
Before following these setup instructions, make sure your computer already contains an Ethernet (or NIC) card.

1. Left click on the **Start, Control Panel**.
2. On the Control Panel screen, double click on the **Network Connections** icon.



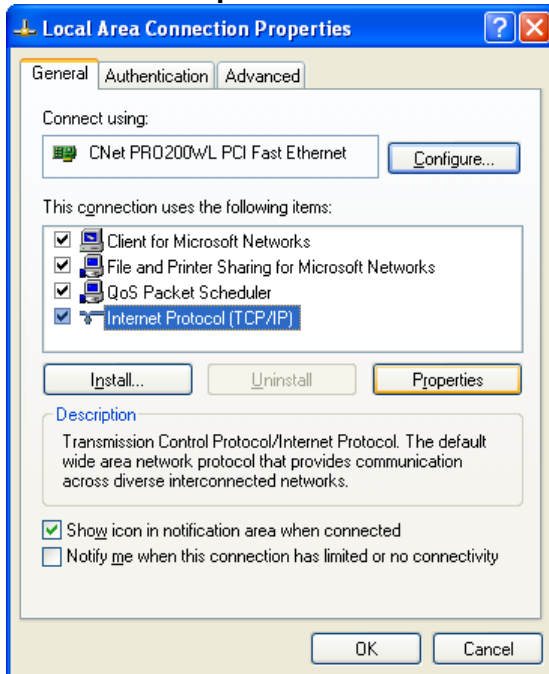
3. On the Network Connections screen, right click on the **Local Area Connection** icon.

4. Left click on **Properties**.



5. On the Local Area Connection Properties screen, select **Internet Protocol (TCP/IP)**.

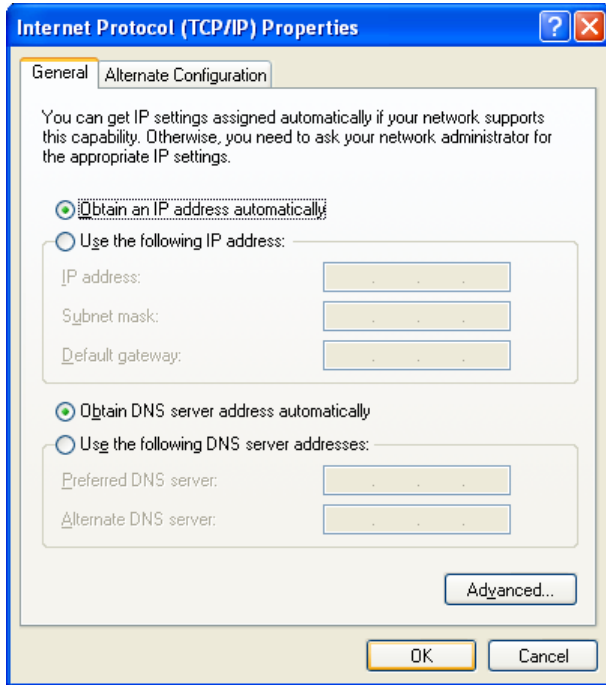
6. Click on the **Properties** button.



7. On the Internet Protocol (TCP/IP) Properties screen, select **Obtain an IP Address Automatically**.

8. Select **Obtain DNS Server Address Automatically**.

9. Click on the **OK** button.



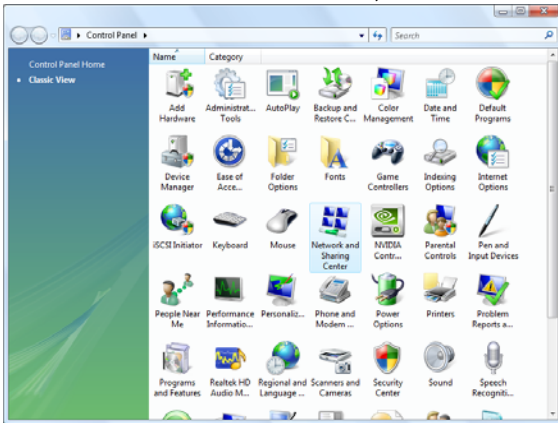
10. The Local Area Connection Properties screen reappears. Click on the **OK** button. If you get prompted to reboot, click on the **No** button.

11. Perform a total shutdown of your computer: select **Start, Turn off Computer, Turn off**. Once the computer has shut down, restart it.

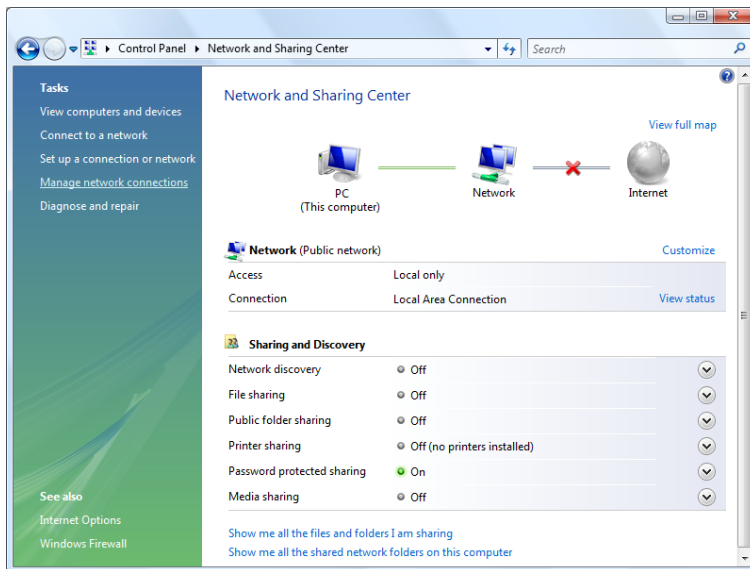
For Windows Vista

Before following these setup instructions, make sure your computer already contains an Ethernet (or NIC) card.

1. Left click on **Start, Control Panel**.
2. On the Control Panel screen, double click on Network and Sharing Center.

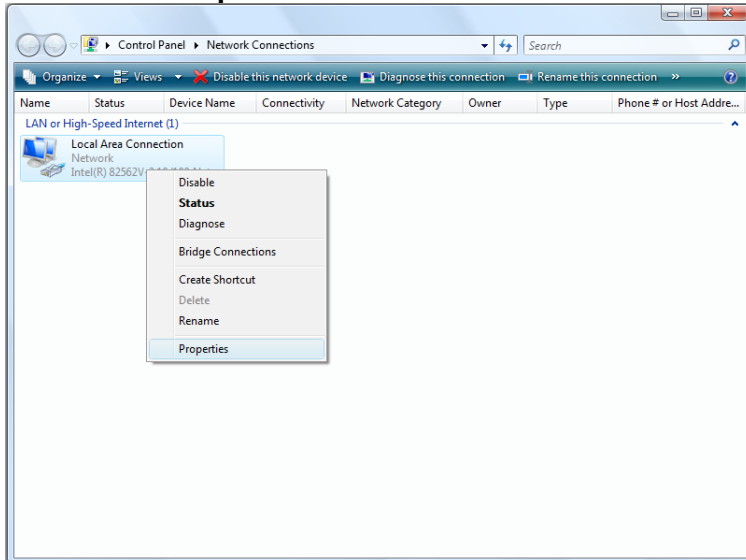


3. Under Tasks in the left menu bar, select **Manage Network Connections**.



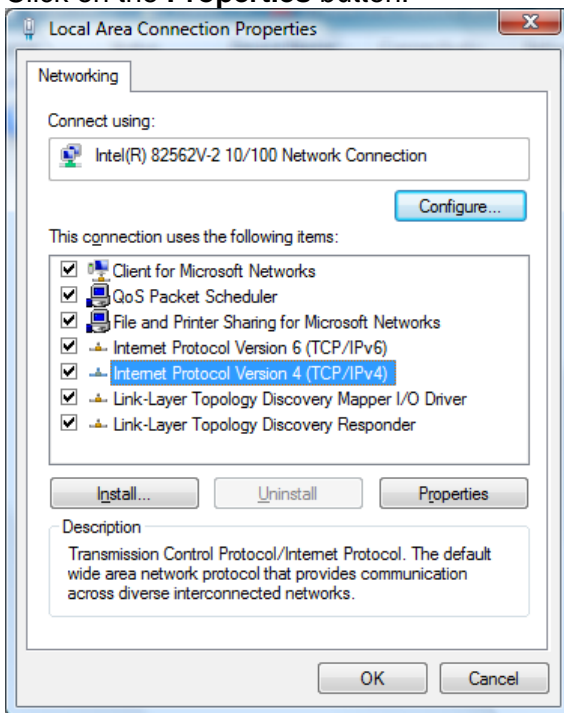
4. Right click on the **Local Area Network Connection** icon.

5. Left click on **Properties**.



6. On the Local Area Network Properties screen, select **Internet Protocol (TCP/IPv4)**.

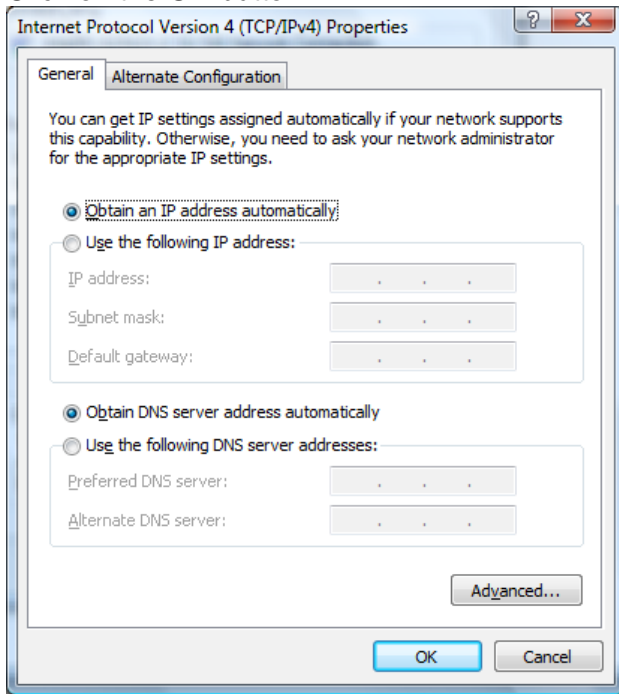
7. Click on the **Properties** button.



8. On the Internet Protocol (TCP/IPv4) Properties screen, select **Obtain an IP Address Automatically**.

9. Select **Obtain DNS Server Address Automatically**.

10. Click on the **OK** button.



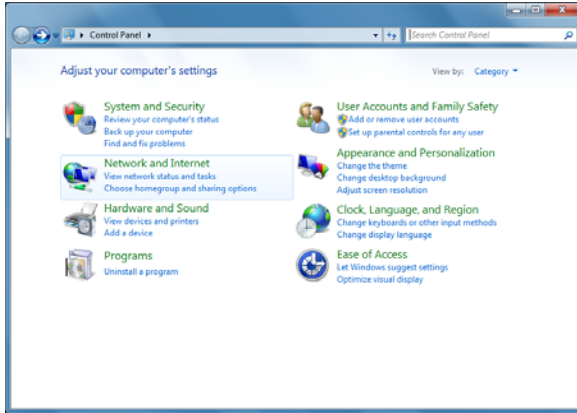
11. The Local Area Connection Properties screen reappears. Click on the **OK** button. If you get prompted to reboot, click on the **No** button.

12. Perform a total shutdown of your computer: select **Start and Shut Down**. Once the computer has shut down, restart it.

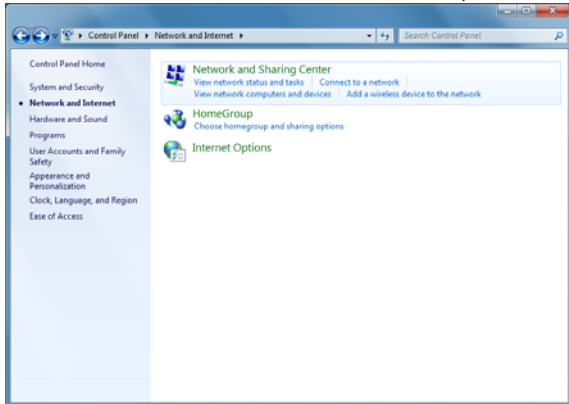
For Windows 7

Before following these setup instructions, make sure your computer already contains an Ethernet (or NIC) card.

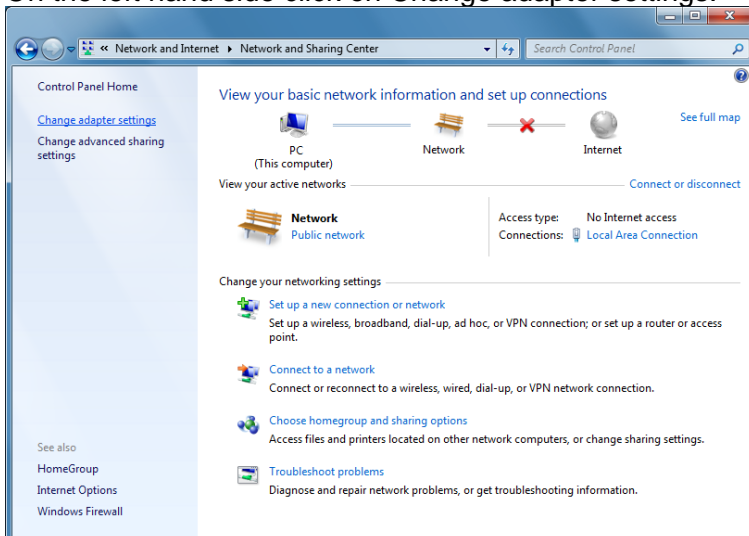
1. Left click on **Start, Control Panel**.
2. On the Control Panel screen, double click on Network and Internet.



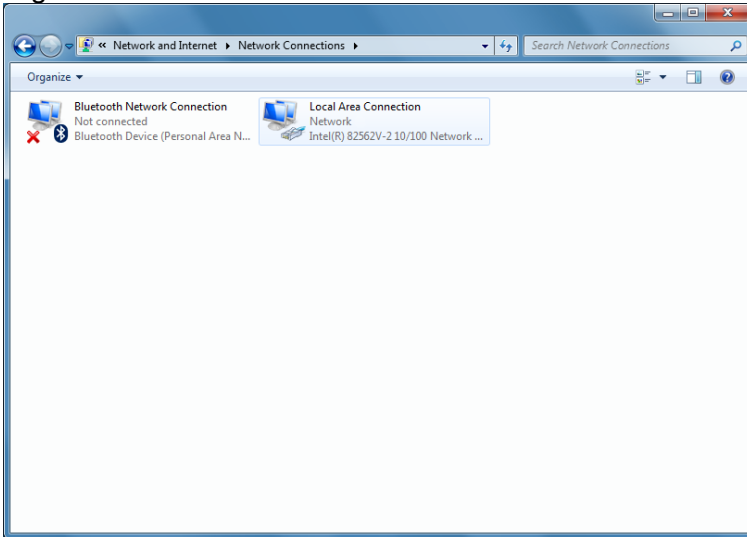
3. In the Network and Internet Screen, double click on Network and Sharing Center.



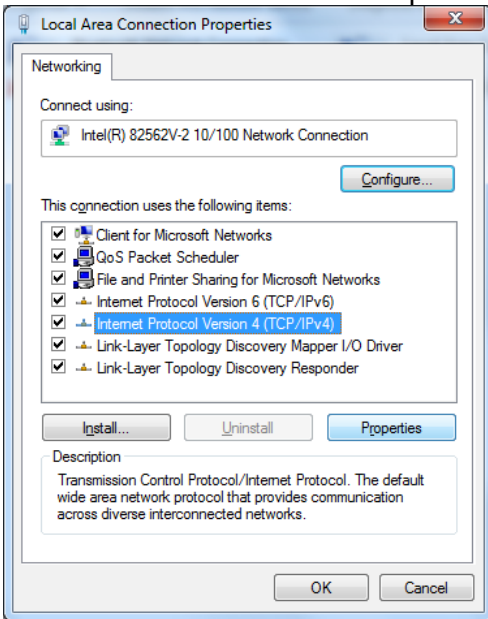
4. On the left hand side click on Change adapter settings.



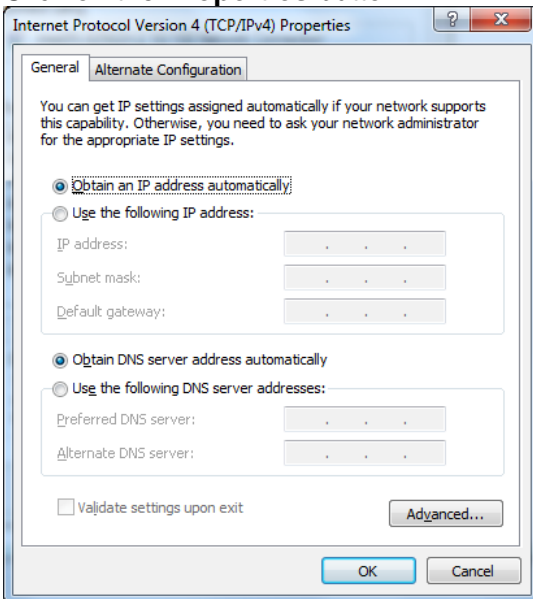
5. Right click on the Local Area Connection icon and left click on Properties.



6. On the Local Area Network Properties screen, select **Internet Protocol (TCP/IPv4)**.



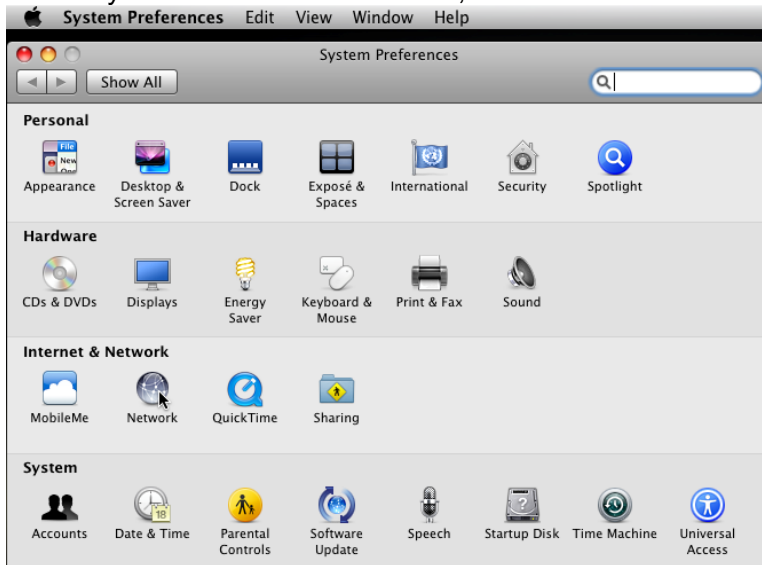
7. Click on the **Properties** button.



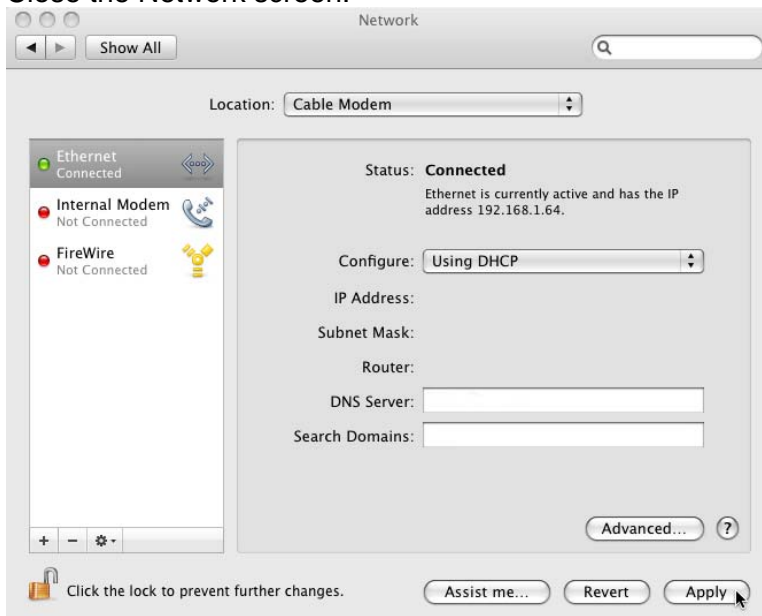
8. On the Internet Protocol (TCP/IPv4) Properties screen, select **Obtain an IP Address Automatically**.
9. Select **Obtain DNS Server Address Automatically**.
10. Click on the **OK** button.
11. The Local Area Connection Properties screen reappears. Click on the **OK** button. If you get prompted to reboot, click on the **No** button.
12. Perform a total shutdown of your computer: select **Start and Shut Down**. Once the computer has shut down, restart it.

For Mac OS X

1. From the Apple menu, click on **System Preferences**.
2. In the System Preferences window, click on the Network icon.



3. The Network screen appears. On the left hand column click on **Ethernet**.
4. In the Configure window confirm that it's set on **Using DHCP**.
5. Click on the **Apply** button.
6. Close the Network screen.

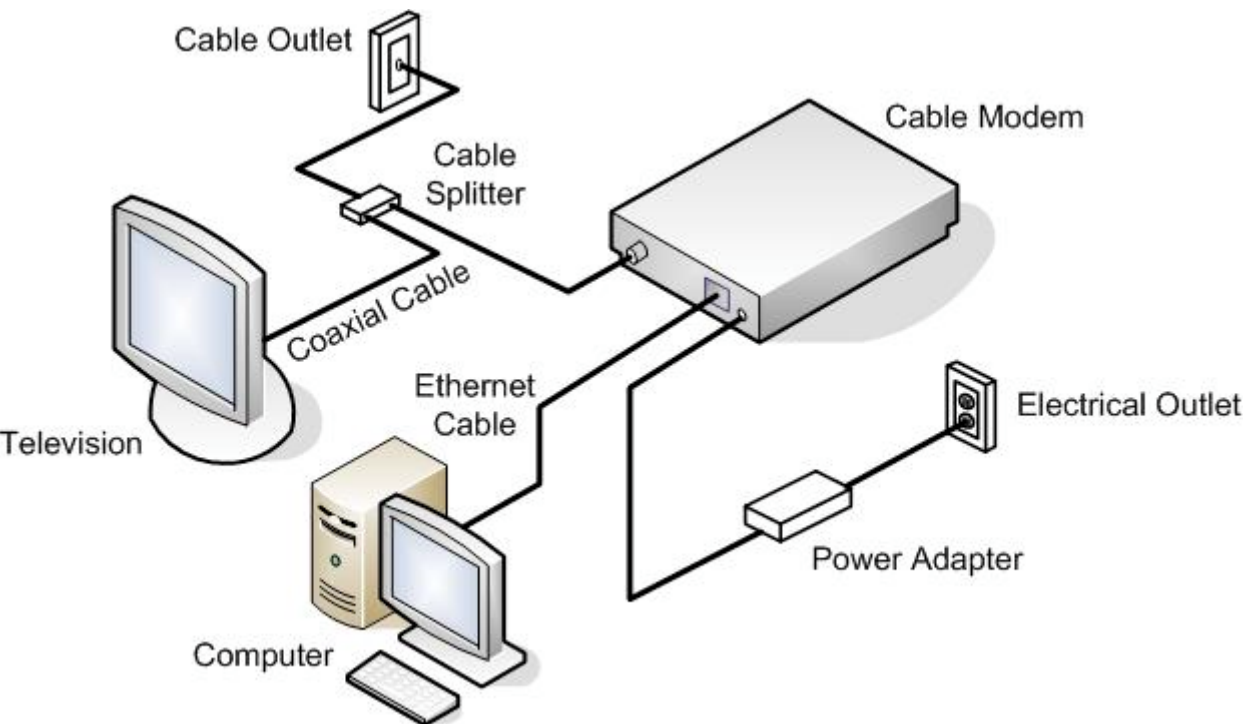


STEP 3: Installing the Cable Modem

These instructions vary based on whether you're connecting the modem to a single computer or multiple computers. Follow the section that applies to your situation.

For a Single Computer

1. Connect one end of the coaxial cable to the cable modem.
2. Connect the other end of the coaxial cable to the cable outlet or cable splitter if a TV is also connected to this cable outlet.
3. Connect one end of the **Ethernet** cable (the one that came with your modem) to the back of the modem, inserting it into the **Ethernet** port.
4. Connect the other end of the **Ethernet** cable into the Ethernet card port in the back of your computer's CPU.
5. Connect the round end of the power supply cable (the one included in your kit) to the back of the modem, inserting it into the power supply connector.
6. Plug the large end of the power supply cable into the electrical outlet in your wall.
7. Most modems do not have a power button. Once you plug in the modem, the unit should be on.
8. Open your web browser (Internet Explorer or Netscape) and go to www.windstream.com (or another website that you've never accessed before on your PC, one your browser would not have in its memory). If you are able to access the site, the setup process is complete!



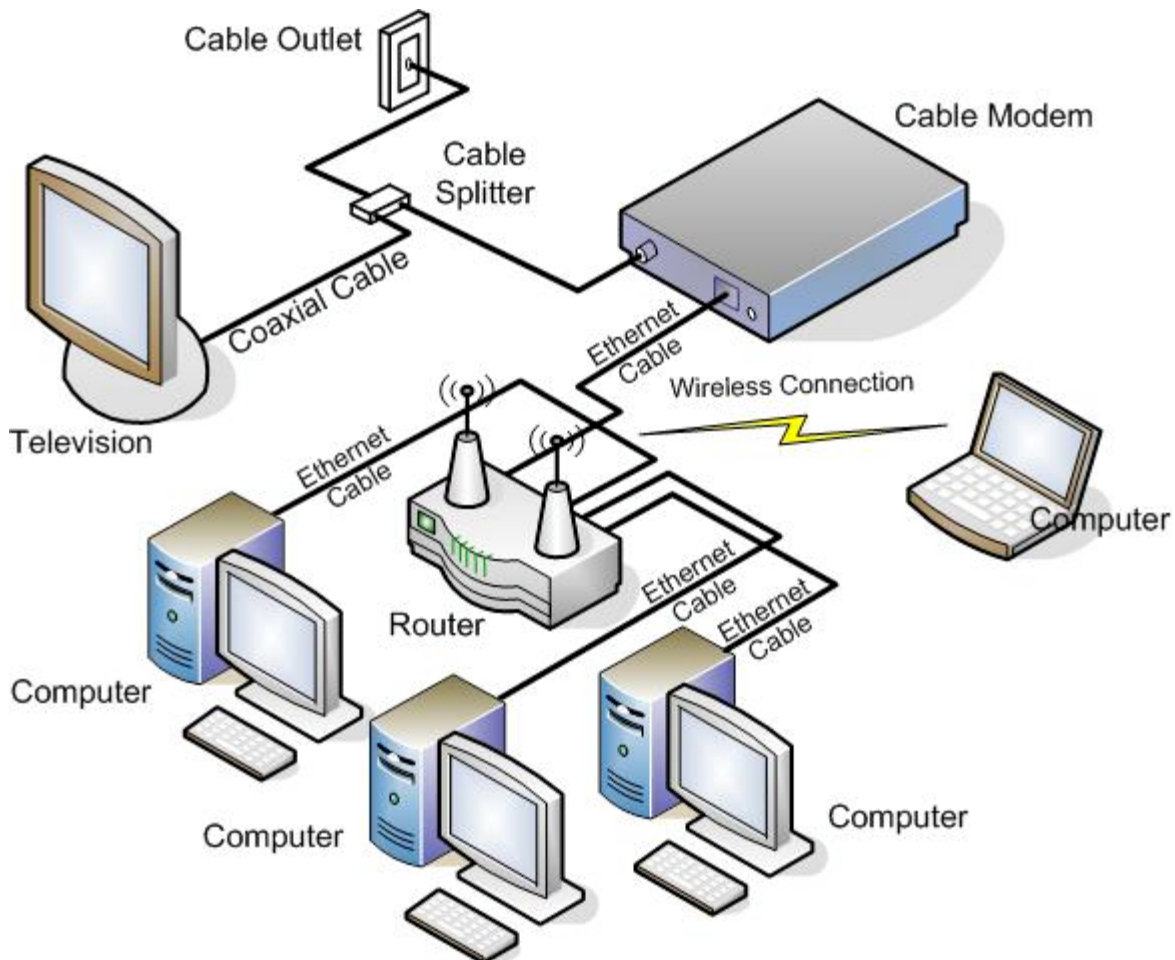
For Multiple Computer with a Router

With a router 3 or more computers can share the internet connection without any additional cost.

1. Connect one end of the coaxial cable to the cable modem.
2. Connect the other end of the coaxial cable to the cable outlet or cable splitter if a TV is also connected to this cable outlet.
3. Connect one end of the **Ethernet** cable (the one that came with your modem) to the back of the modem, inserting it into the **Ethernet** port.
4. Connect the other end of the **Ethernet** cable into the **WAN** or **Internet** port of the router.

NOTE: Your cable modem kit comes with one Ethernet cable. You will need to purchase additional cable to network additional computers and continue with numbers 5 and 6.

5. Connect one end of another **Ethernet** cable to the back of one of your computers.
6. Connect the other end of the Ethernet cable to one of the ports in the router (Generally these ports are labeled **1-4**). Do not connect it to the **WAN** or **Internet** Port.
7. Repeat #5-6 until all of your computers are connected into the router.
8. In the router settings make sure Internet Connection type is DHCP (Automatic does not require login).
9. Open your web browser (Internet Explorer or Netscape) and go to www.windstream.com (or another website that you've never accessed before on your PC, one your browser would not have in its memory). If you are able to access the site, the setup process is complete!



For Multiple Computers with a Hub/Switch

If more than 3 computers will be connected to the hub/switch, additional i.p. addresses will need to be purchased. Call our customer service department at 1-800-782-6206 to order.

1. Connect one end of the coaxial cable to the cable modem.
2. Connect the other end of the coaxial cable to the cable outlet or cable splitter if a TV is also connected to this cable outlet.
3. Connect one end of the **Ethernet** cable (the one that came with your modem) to the back of the modem, inserting it into the **Ethernet** port.
4. Connect the other end of the **Ethernet** cable to the **Up-Link** port of the hub or switch. (Not all switches have an uplink port. Any port will do)

NOTE: Your cable modem kit comes with one Ethernet cable. You will need to purchase additional cable to network additional computers and continue with numbers 5 and 6.

5. Connect one end of another **Ethernet** cable to the back of one of your computers.
6. Connect the other end of the Ethernet cable to one of the ports in the hub/switch (Generally these ports are labeled **1-4** or **1-8**). Do not connect it to the **Uplink** Port.
7. Repeat #5-6 until all of your computers are connected into the router.
8. Open your web browser (Internet Explorer or Netscape) and go to www.windstream.com (or another website that you've never accessed before on your PC, one your browser would not have in its memory). If you are able to access the site, the setup process is complete!

